

# LOW HEADROOM DUAL SPEED HYUNDAI WIRE ROPE HOIST WITH DUAL SPEED MOTORIZED TROLLEY ~ HR SERIES

1-Tonne to 5-Tonne Capacity



## HYUNDAI HOISTS CERTIFIED BY C.S.A & U.S STANDARDS (ANSI/UL STD NO.508 & 1004)

- ④ Hoisting motors are 3 phase, 60 Hz squirrel cage induction T.E.N.V. (totally enclosed non-ventilated) motors designed under the performance standard ISO 4301 to endure the high operation cycle with continuous rating time (30 min) and 100% rated load. These double reeved hoists provide "true vertical" lifting.
- ④ Hoist brakes are composed of electric magnetic D.C. disc brake (with reaction released spring by power). These fail safe brakes hold in the event of a power failure and the slip ratio is less than 1% per minute of hoisting speed under the 100% load weight. The brake torque suspends over 150% under the rated load weight.
- ④ Upper limit switches are designed with a two step stopping system (lever cam type). When the lever reaches the "first stop" the hoist control power circuit is shut off, if the lever continues to the highest "second stop" the main power circuit will be cut off.
- ④ Trolley flange widths are available to suit many beam sizes. Standard non-tapered wheel adopt wide flange style beams (tapered wheels for I-beam applications are available upon request).
- ④ Control Panels (110 volt control) are composed of E.O.C.R (electronic overload control relays) to protect the motors and N.F.B (non fail brakes) protect against hoist damage with two step lever cam to control highest limit. Electro-magnetic contactors mechanically interlock each motion with safety. Panels are Nema 4 rated and provide protection from water, dust and vibration (for indoor or outdoor use).
- ④ All Wire rope is designed for a safety factor of 5 to 1 (breaking strength).
- ④ Reduction gears are comprised of hardened (S.C.M or S45C) steel providing strength. The gear tooth treated induction hardening reduces noise and provides smooth operation, enhancing the endurance of wear-out & abrasion resistance (due to the structured hard surface layer and elastic inner layer).
- ④ All load blocks are equipped with spring loaded safety latches and circulate 360 degrees by hand under the rated load.

*Western North America's Authorized Dealer:*



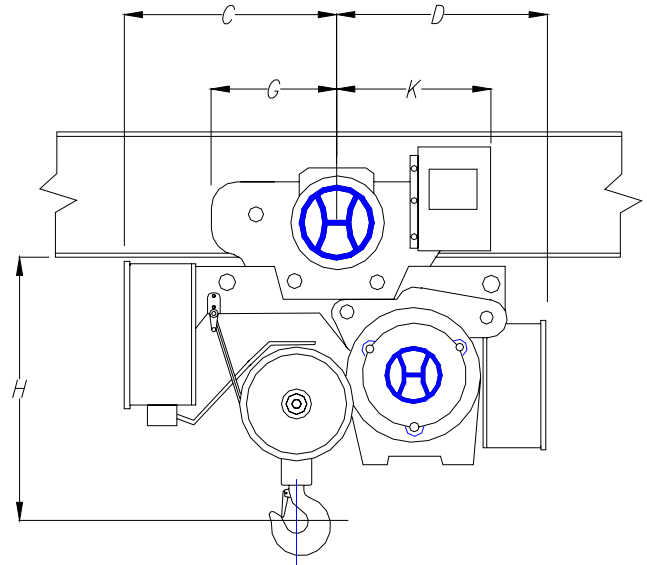
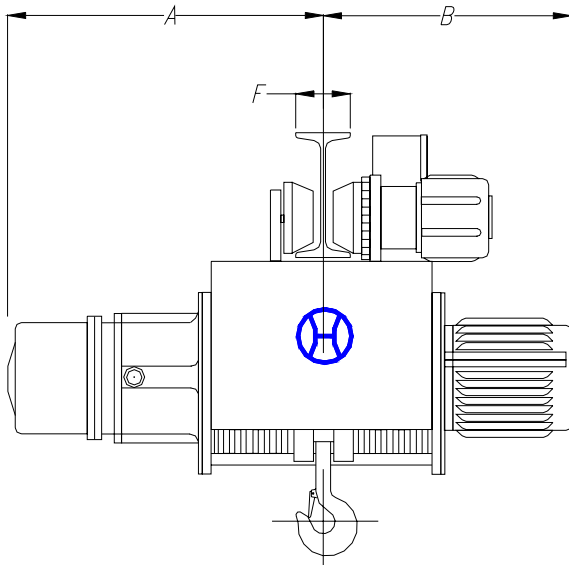
### **MUSSELL CRANE MANUFACTURING**

P.O. Box 253, 620 B Wellington Avenue, Chilliwack, B.C. Canada V2P-6J1  
Ph: (604) 792-5023 Fax: (604) 792-5038 E-mail: [info@mussellcrane.com](mailto:info@mussellcrane.com)  
Web-site: [www.mussellcrane.com](http://www.mussellcrane.com)



# LOW HEADROOM DUAL SPEED HYUNDAI WIRE ROPE HOIST WITH DUAL SPEED MOTORIZED TROLLEY ~ HR SERIES

## 1-Tonne to 5-Tonne Capacity



CAPACITY (tonne)		1-TON		2-TON		3-TON		5-TON	
Hoist	Lift Height (meters)	6 M (19.7')		6 (19.7')		6 (19.7')		6 (19.7')	
	Speed (high/creep m/min)	12/1.2 m/min		10/1 m/min		9/0.9 m/min		5.6/0.56 m/min	
	Speed (high/creep F.P.M.)	39/3.9 F.P.M.		32/3.2 F.P.M.		29/2.9 F.P.M.		18/1.8 F.P.M.	
	Motor (kW x p)	2.2/0.4 x 4		3.7/0.4 x 4		5.5/1.4 x 4		5.5/1 x 6	
	Rope Construction	6 x 24		6 x 24		6 x 37		6 x 37	
	Rope Dia. (mm) x no.	6 x 4		8 x 4		9 x 4		12.5 x 4	
	Brake	DC Magnet Disc							
Trolley	Speed (high/low m/min)	16/8 m/min		16/8 m/min		16/8 m/min		16/8 m/min	
	Speed (high/low F.P.M.)	52/26 F.P.M.		52/26 F.P.M.		52/26 F.P.M.		52/26 F.P.M.	
	Motor (kW x p)	.75/1.75 x 4		.75/1.75 x 4		.75/1.75 x 4		.75/1.75 x 4	
	Brake	DC Magnet Disc							
Dimensions Approx. mm	A	738	29"	798	31.4"	880	37"	960	37.8"
	B	480	18.9"	530	20.9"	547	21.5"	620	24.4"
	C	405	16"	455	18"	480	18.9"	554	21.8"
	D	290	11.4"	385	15"	395	15.6"	466	18.3"
	F	125-175	4.9"-6.9"	200-300	7.8"-11.8"	200-300	7.8"-11.8"	200-300	7.8"-11.8"
	G	200	7.8"	225	8.9"	260	10.2"	275	10.8"
	H	480	18.9"	570	22.5"	585	23"	760	30"
K	200	7.8"	225	8.9"	225	8.9"	275	10.8"	
Min. radius of curve (m)		2	6.6'	2.5	8.2'	2.5	8.2'	2.8	9.2'
Weight (approx.) kg.		275	606 Lbs.	440	970 Lbs.	545	1,202 Lbs.	775	1,709 Lbs.

*Western North America's Authorized Dealer:*



### MUSSELL CRANE MANUFACTURING

P.O. Box 253, 620 B Wellington Avenue, Chilliwack, B.C. Canada V2P-6J1  
Ph: (604) 792-5023 Fax: (604) 792-5038 E-mail: [info@mussellcrane.com](mailto:info@mussellcrane.com)  
Web-site: [www.mussellcrane.com](http://www.mussellcrane.com)

