

# Mussell Wheels

M= Module  
T-Tooth

All Module 3 Pinions  
& Module 4 Pinions  
With 20 Degree  
Pressure Angle.

All pinions are  
made of 4140  
heat treated  
stress relief steel.

Custom pinions  
available upon  
request.

Alternative  
material available  
upon request.

## MUSSELL CRANE MFG.

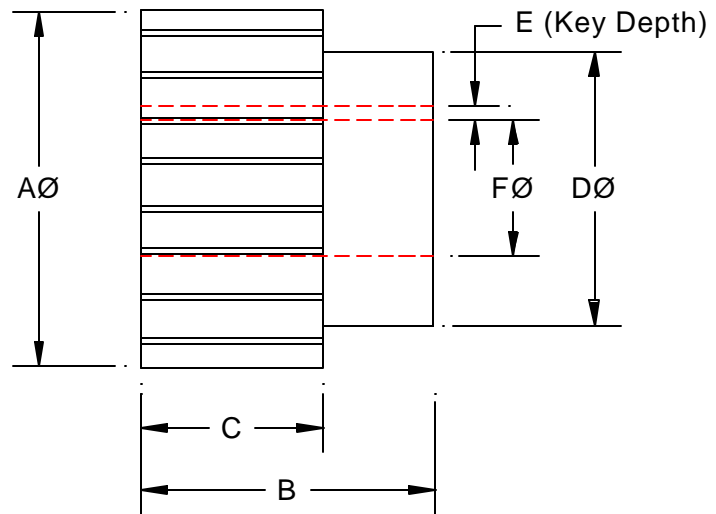
620-B Wellington Avenue,  
P.O. Box 253, Station Main,  
Chilliwack, B.C. Canada  
V2P 6J1  
Phone: 604-792-5023  
Fax: 604-792-5038  
Email: info@mussellcrane.com

*"Proudly Canadian"*

## STANDARD PINION DIMENSIONAL DATA

Millimeters

Model	A	B	C	D	E	F	Bore	Wheel (mm)
M3/20T	66	57.15	38.1	49.53	2.79 2.87	25.4	25.4 STD 31.75 OPP	120 153 253
M3/23T	75	57.15	38.1	50.8	2.79 2.87	25.4	25.4 STD 31.75 OPP	120 153 253
M4/20T	88	82.55	Gear Cut Full Length		2.87 4.24	31.75	31.75 STD 41.275 OPP	363



Inches

Model	A	B	C	D	E	F	Bore	Key Size	Wheel (mm)
M3/20T	2.598	2.250	1.500	1.950	0.110 0.113	1.000	1.000 STD 1.250 OPP	1/4" 1/4" 1/4"	120 153 253
M3/23T	2.953	2.250	1.500	2.000	0.110 0.113	1.000	1.000 STD 1.250 OPP	1/4" 1/4" 1/4"	120 153 253
M4/20T	3.465	3.250	Gear Cut Full Length		0.113 0.167"	1.250	1.250 STD 1.625 OPP	1/4" 3/8"	363